

**MMS**  
SHIP REPAIR • OFFSHORE • WORKBOATS

# Supreme

Available for Charter



## 26 Metre Offshore Windfarm Support Vessel

The **MMS Supreme** is a high specification catamaran. Purpose-built to support the Offshore Renewable energy sector during the initial installation, operation and maintenance phases.

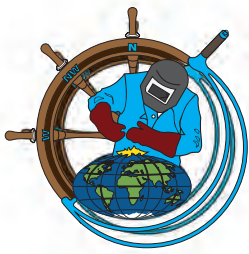
The vessel is classed to Bureau Veritas Category 1 Area. This multipurpose high speed catamaran is capable of carrying out a multitude of different roles. The deck area of 90m<sup>2</sup> is capable of carrying 2 x 20ft or 4 x 10 ft containers which makes this vessel ideal for general supply and cargo carrying.

The vessel's 22,000 litre integral fuel tanks have the capability of transferring fuel to offshore assets and/or vessels. The vessel has an integrated pressure washing system that can be utilised for boat landing/foundation cleaning.

There are comfortable passenger areas on board that consist of seating for up to 12 persons, galley area for preparing refreshments and entertainment systems including televisions and radio. All to ensure optimal comfort whilst on board. The vessel has on-board accommodation in the form of 4 cabins which can sleep 8 personnel.

### Role Capability

- Windfarm Support
- Safety Standby
- Personnel Transfer
- Supply Vessel
- Survey Work
- Dive Support
- Guard Work
- ROV Deployment
- Cleaning of Offshore Structures
- Mobile Workshop
- Lubricant Exchange



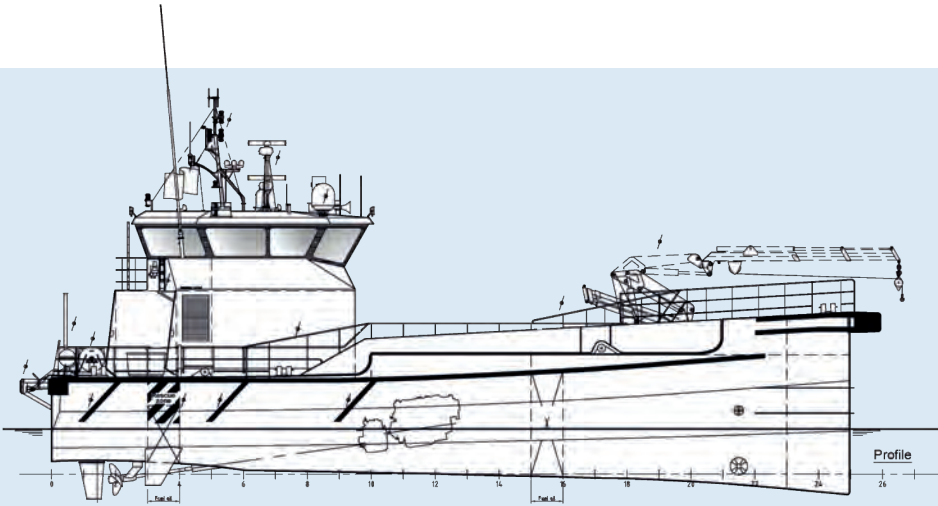
**MMS**  
SHIP REPAIR • OFFSHORE • WORKBOATS

# Supreme

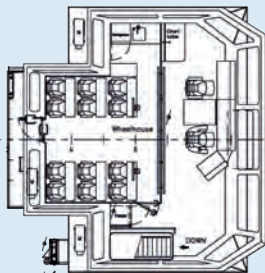
26 Metre Offshore Windfarm Support Vessel

## Dimensions & Performance

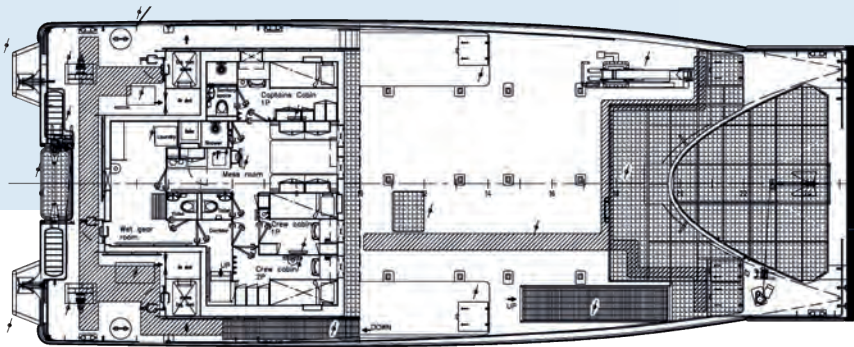
- Length OA: 26.20m
- Breadth: 10.40m
- Draft: 2.0m - 2.2m
- Weight: 81.58 Tonnes
- Service Speed: 24.5 Knots
- Certification: Bureau Veritas Category 1 area
- Fuel Tank Capacity: 22,000 Litres
- Freshwater Capacity: 3,600 Litres
- Waste Tank Capacity: 500 Litres
- Forward Deck: 90.0m<sup>2</sup>
- Cargo Load: 15 Tonnes



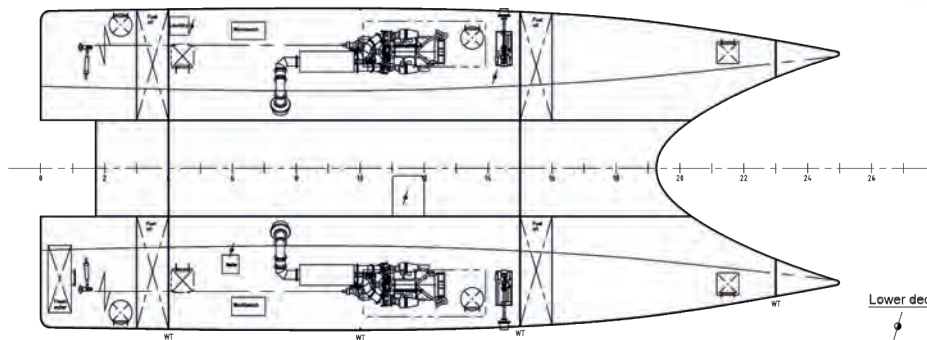
Profile



Bridge deck



Main deck



Lower deck



Call: +44 (0) 1482 221209

# High Speed Support Vessel

## The MMS Supreme is classed to BV Category 1 Area

### General

- Capacity: 12 passengers, 4 crew
- Construction: Aluminium
- Wind farm service and Cat 1

### Deck Equipment

- Anchoring arrangement in accordance with class
- HELA 20-45 deck crane
- 90.0m<sup>2</sup> forward deck space
- 15.0T cargo capacity on fore deck
- Multiple lashing points

### Welfare Facilities:

- 4 x 1 person cabins + 4 spare bunks
- Mess room
- Day room
- Pantry
- Toilet and shower facilities
- Fridges, freezer, washer/dryer

### Entertainment:

- LCD TV's
- DVD Players
- Internet / Wifi

### Propulsion System:

- 2 x Caterpillar C32
- 2 x Reintjes ZWVS 440/1 (Two Speed)
- Fixed pitch propellers

### Generators

- 2 x Caterpillar C2.2T (25KW)

### Bow Thrusters:

- 2 x 52KW

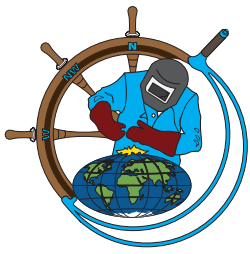
### Electronic Equipment

- 2 x JRC, JMA 5212-4 MK2 Radars
- ECDIS
- AIS JRC, JHS 183
- GPS Compass JRC, JRL-21
- GPS/NAVTEX
- VHF's +VHF's Handheld
- MF/HF
- CCTV (5 Cameras)
- 1 x Pesch 1000W Searchlight
- Autopilot

### Lifesaving Equipment

- 2 x Life buoys
- 16 x Life jackets
- 16 x Immersion suits
- Portable fire extinguishers according to class requirements
- Fixed NOVEC CO<sup>2</sup> system in engine rooms
- 1 x 16 person liferaft
- 16 x Thermal protection aids
- Elevating MOB Recovery/Dive platform fitted at the transom





**MMS**  
SHIP REPAIR • OFFSHORE • WORKBOATS

**Supreme**  
Available for Charter



MMS Crusader and MMS Supreme alongside the MMS Humber Logistics Base

MMS Offshore Renewable Services is a fully ISM Approved workboat operator.

For further information please contact:

Alexandra Dock, Hull, HU9 1TA, United Kingdom



**Offshore Department:**

T: +44 (0) 1482 221209

E: [info@mms-offshore.co.uk](mailto:info@mms-offshore.co.uk)

W: [www.mms-offshore.co.uk](http://www.mms-offshore.co.uk)



All work undertaken is subject to Terms and Conditions, a copy of which is available on request.  
MMS Offshore: Registered in England: 8356950 VAT Registration: GB 258 3993 53

[www.mms-offshore.co.uk](http://www.mms-offshore.co.uk)